

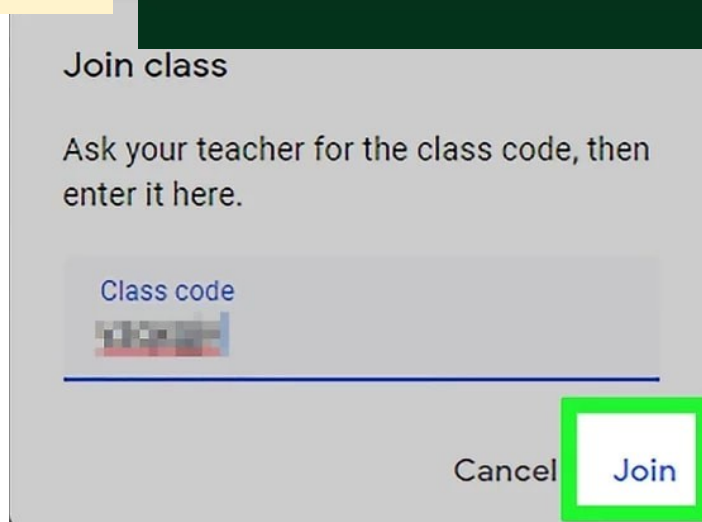
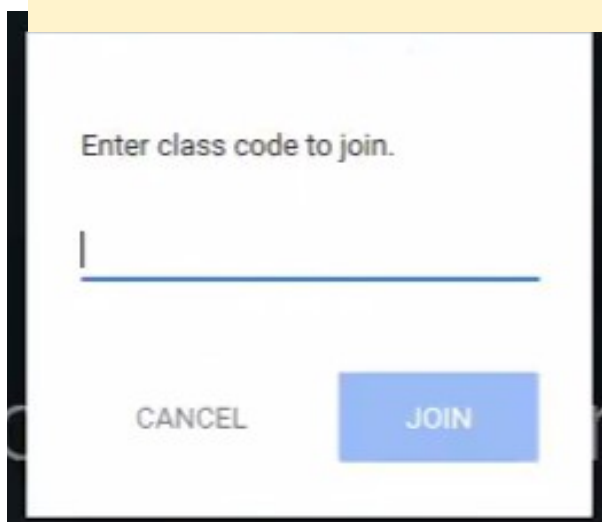
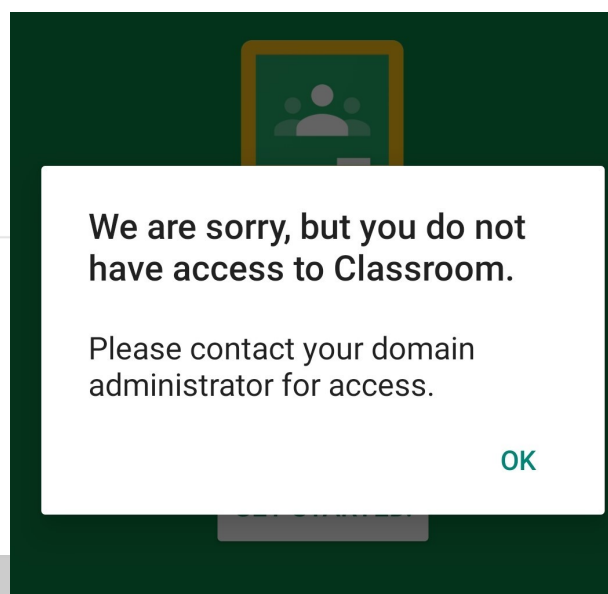
Common Google Classroom Access Errors

You don't have access to this service. To request access, contact the [administrator](#) for your organisation's Google services.

If you're a Google services administrator, you can turn on services. [Learn more](#)

If you see any of these errors, it is because you are not logging in with your G Suite for Education credentials—you may be trying to use a personal Google account instead.

You must be logged in with the user name that ends in @Manorfield.surrey.sch.uk.



This error indicates that you are trying to access Google Classroom on a mobile device that does not have a security PIN set up to open the device. You will need to set one in order to continue.

